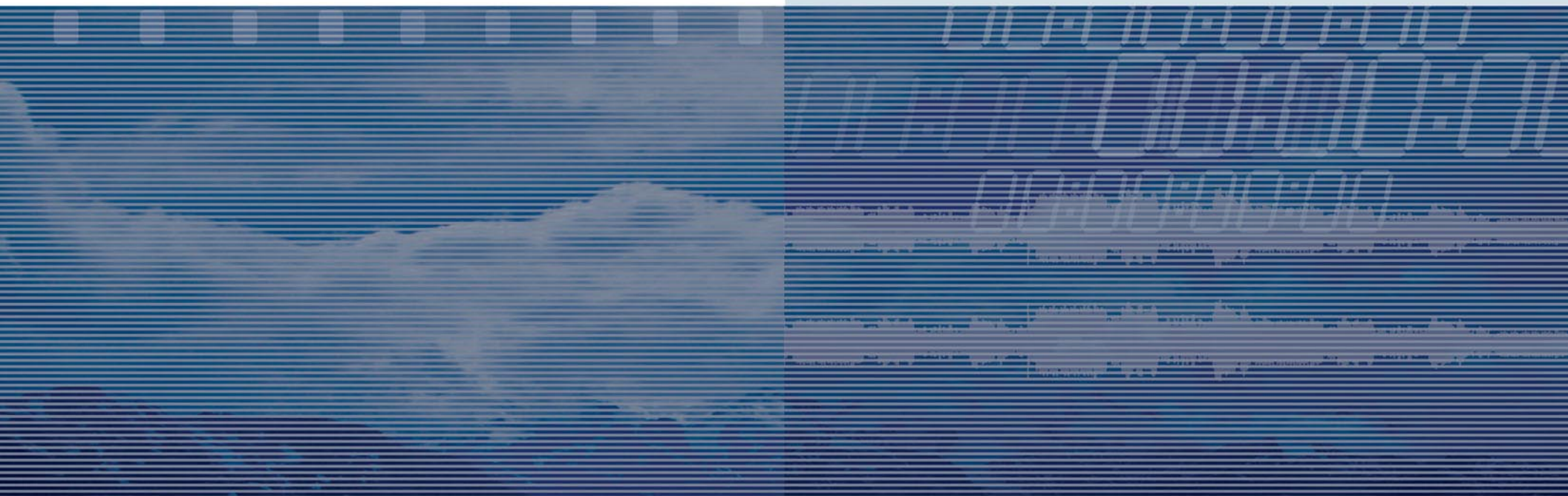




**INCITE**  
INCITE MULTIMEDIA CORPORATION

THE FUTURE OF NETWORK BROADCASTING NOW

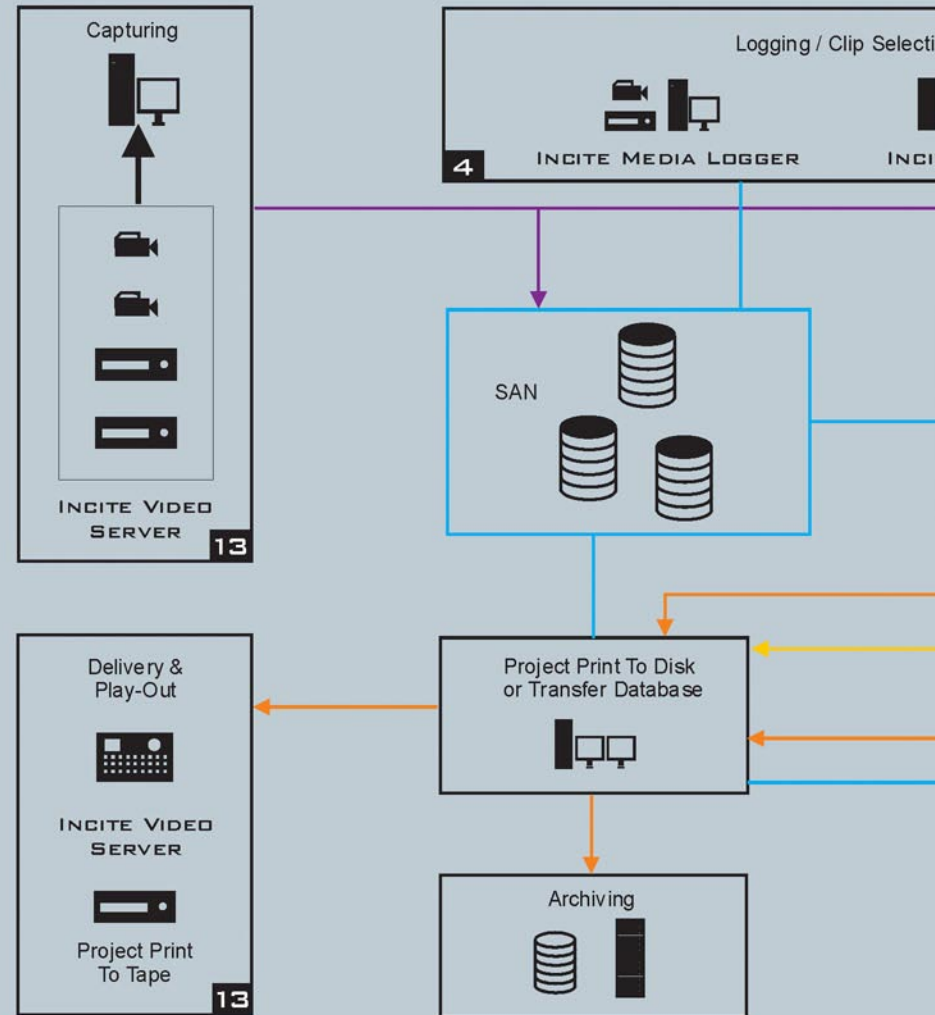


## INCITE

**Incite** – (*in-syt*) – v. to urge on to action, stir up, especially in terms of production, hence Incite editing workflow; **Incite Multimedia Corporation** – n. designers of editing software, post-production applications and end-to-end solutions used by independent editors, post-production facilities and TV broadcasters around the world; **Incite Products** – n. (*collective*) a hierarchical arrangement of products that handle ingest, advanced media management, real-time editing, pre-production, newsroom production, postproduction, HD finishing, archiving and play-out; **Incite Workflow** – n. complete collaboration between hardware-based and software-based products as a result of media file sharing, metadata preservation (throughout production), dynamic clip architecture and project transparency.

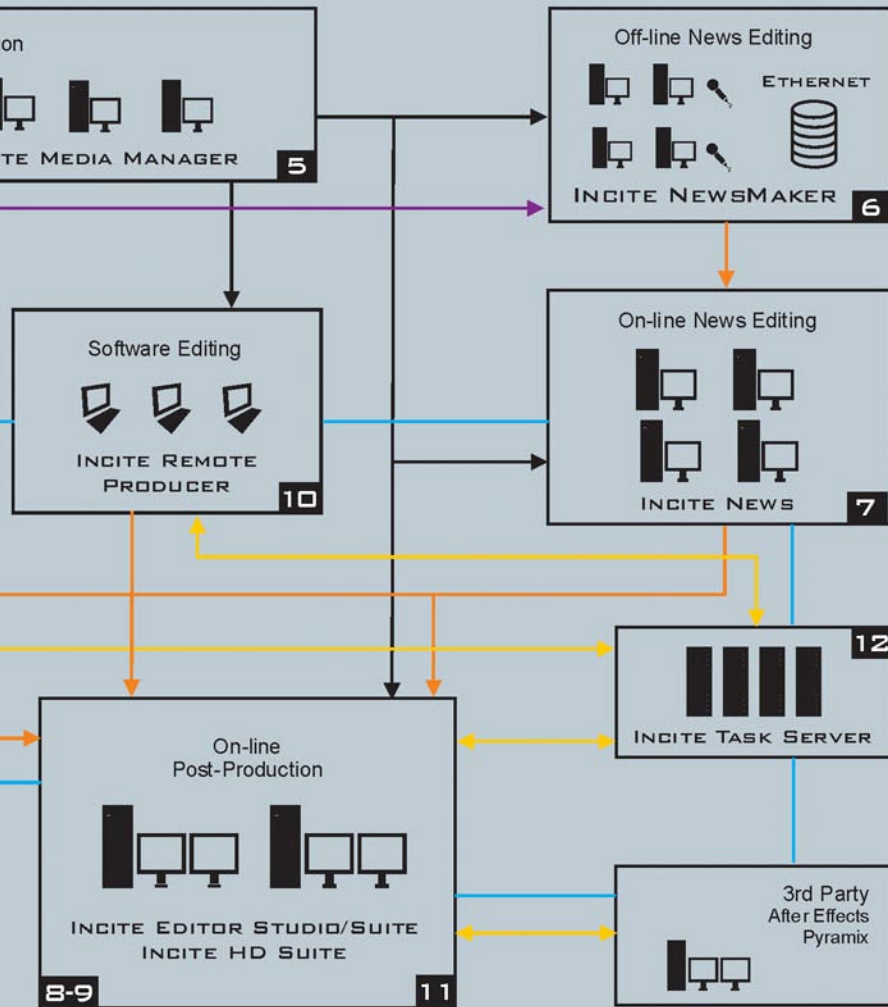


### INCITE NETWORK WORKFLOW



→ Acquisition    → Logging/Management    → Media

# PRODUCT FAMILY



## 4 // INCITE MEDIA LOGGER - M1

Network-aware logging application for clip and metadata creation

## 5 // INCITE MEDIA MANAGER - M2

Metadata, logging, search and media asset control in network environments

## 6 // INCITE NEWSMAKER - N1

Software-codec, proxy editor designed for the newsroom journalist

## 7 // INCITE NEWS - N2

On-line, fast-cutting editor that communicates with automation systems

## 8 // INCITE EDITOR/STUDIO/SUITE - E3

Incite's state of the art on-line editing application for post-production and promo

## 10 // INCITE REMOTE PRODUCER - P1

Fully-featured software-based NLE for network and on site production

## 11 // INCITE HD SUITE - H6

Our high-end editing system for the ultimate in HD post-production and finishing

## 12 // INCITE TASK SERVER - Q10

Manage encoding, rendering, capturing and other tasks in the background

## 13 // INCITE VIDEO SERVER - S4

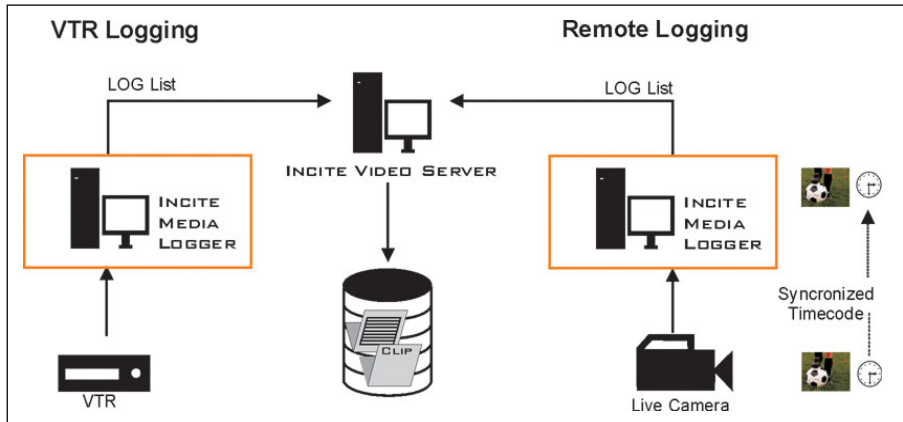
Fully automated 4-channel ingest and play out station

# INCITE MEDIA LOGGER M1



## INCITE'S PORTABLE LOGGER WITH OPEN CONNECTIVITY

**Incite Media Logger** is a network-aware logging application, able to create clips with comments and customizable metadata from VTR or previously captured material. With **Incite Media Logger**, members of the production team can easily log, enter metadata and organize clip selections from tape before the digitization and editing process begins. Once created, logged clips can be captured to SAN storage using **Incite Video Server** or **Incite on-line systems** using automation protocols like Louth and Odetics.



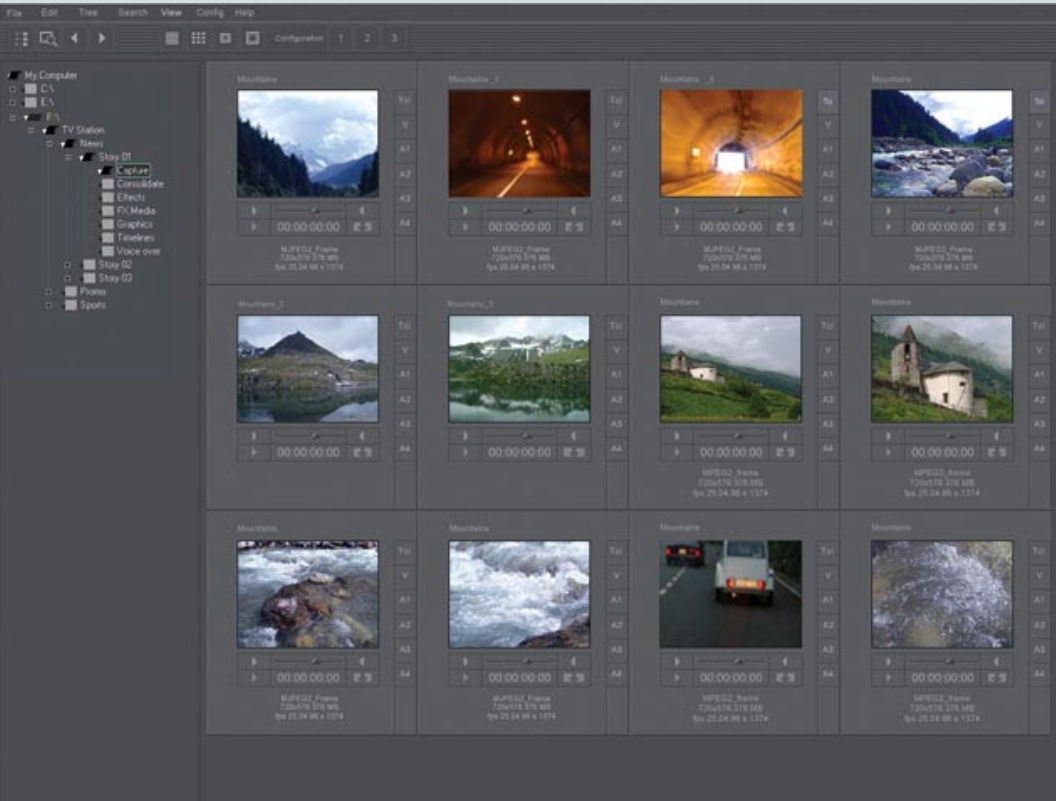
- Customizable metadata input during logging
- Transparent integration with all Incite editing and media management applications
- User friendly interface for journalists, producers and non-expert users
- Full network connectivity; Log clips to any location on the network and share them with newsroom and post-production teams
- Log clips from VTR (including RS422 and 1394 devices)
- Designed for operation on standard PCs and laptops
- Direct communication with dedicated capture units (Incite Video Server, 3<sup>rd</sup> party capturing stations and on-line Incite Editing stations for automated capture)



*Network-aware logging application for clip and metadata creation*

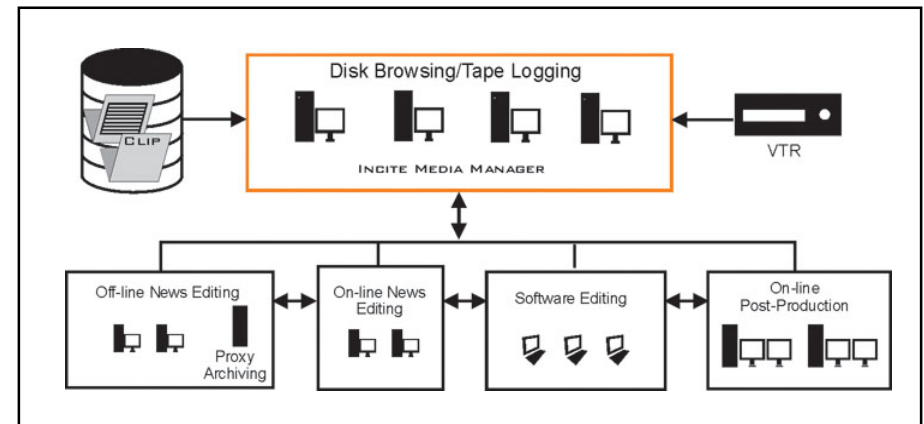
# INCITE MEDIA MANAGER M2

ADVANCED MEDIA MANAGEMENT AND CLIP SELECTION



Metadata, logging, search and media asset control in network environments

**Incite Media Manager** is an advanced media management tool to handle metadata, logging, search and viewing of media assets on anything from a single system to a networked environment, with support for API interfacing to large-scale, enterprise-level, asset management systems. **Incite Media Manager** can be installed on standard PCs and laptops, access digitized media on the SAN network using a basic Ethernet connection and prepare clip management for Incite's timeline editing and post applications: **Incite Newsmaker**, **Incite Remote Producer**, **Incite News**, **Incite Editor Studio/Suite** and **Incite HD Suite**. This means that journalists, producers and assistant editors can start selecting and preparing material for the editing session with unparalleled ease.



- Create clips with fully customizable advanced metadata entries
- Log clips from VTR (including RS422 and 1394 devices) and directly from disk
- Designed for operation on standard PCs and laptops
- Dynamic clip architecture: Clips and metadata created with Incite Media Manager can be viewed throughout the network and used by all Incite applications
- Transparent integration with all Incite editing and finishing products
- Browse, organize, search and bookmark project folders, clip bins, video clips, effects, graphics and all kinds of media files using an explorer-like interface
- Insert and edit rich text scripts per clip for news and film applications
- Add Markers and multiple marker groups per clip
- Browse multiple clips while playing them simultaneously
- Easy to use interface increases collaboration between journalists, producers and editors

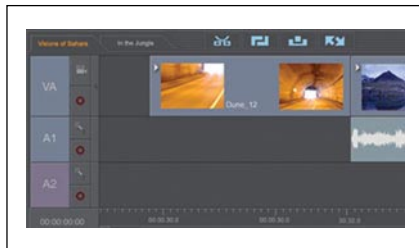
# INCITE NEWSMAKER

## N1

**Incite Newsmaker** is a streamlined, software-codec EDL editor designed to create simple sequences using low bitrate proxy video files and delegate the finishing job to an on-line Incite station that will automatically use high resolution files without any need to recapture. Designed around the needs of the newsroom market and IT environments, **Incite Newsmaker** has open tools to tie in to existing automation and play out solutions. Not only is **Incite Newsmaker** an easy to use simple-cuts editor, it also provides the tools journalists need to create and edit their scripts, with the added ability to let them record voice-overs at professional quality. All of this is built around Incite's dynamic and transparent clip/timeline architecture, letting journalists prepare their stories for senior editors who will finish the project on **Incite News** or **Incite Editor Studio/Suite**.

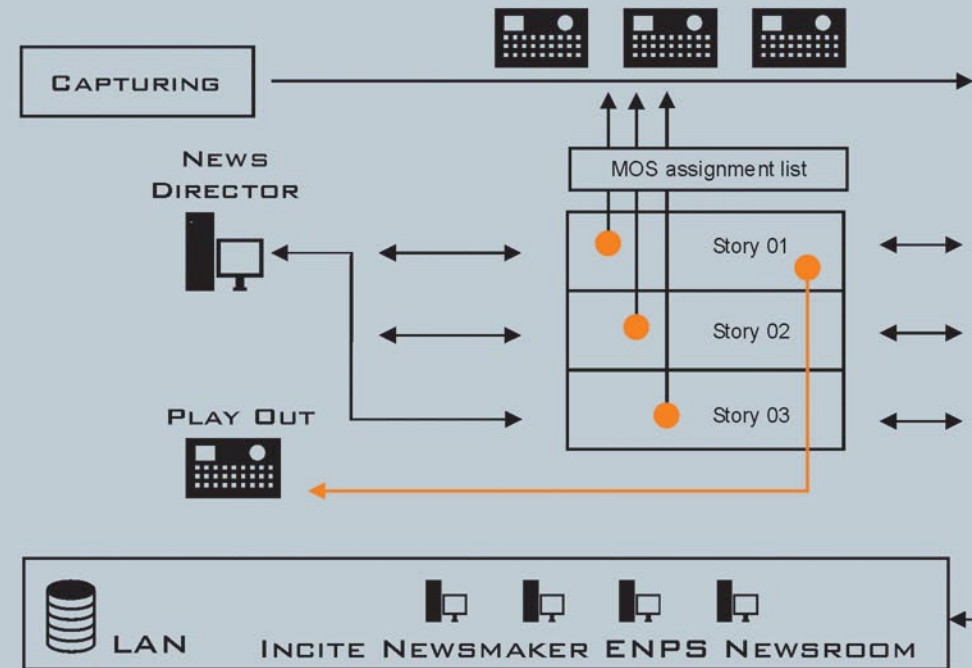


*Software-codec, EDL editor designed for the newsroom journalist*

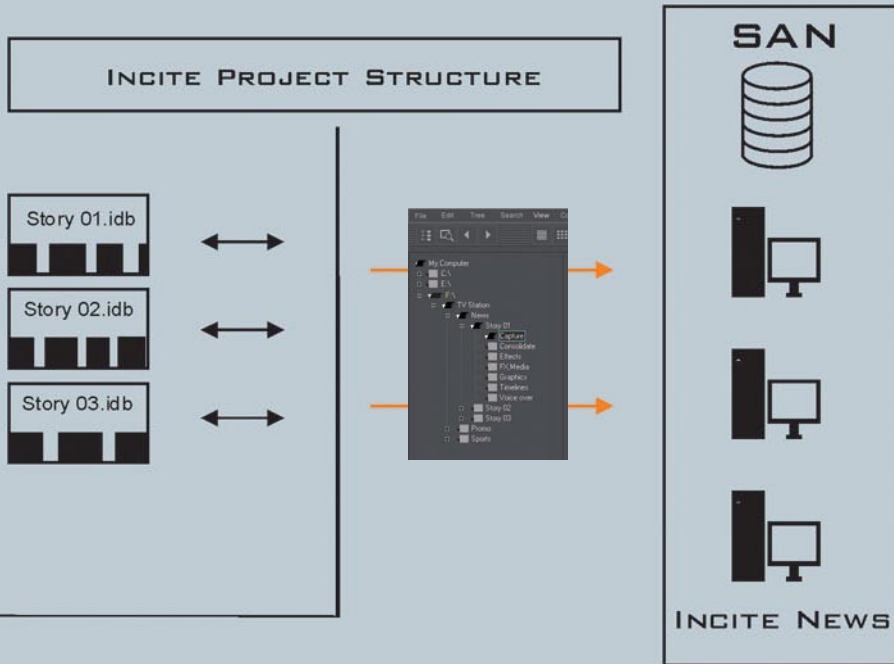


- Designed for journalists, junior editors and producers who need immediate access to media and projects with tools for rough cutting sequences
- New Incite 3.0 user interface, shared by all Incite editing applications
- Instant access to proxy media (automatically created low-bitrate duplicates of broadcast quality video files)
- Advanced media browsing tools for superior control for media selection and sequencing
- MOS-style project structure for integration with automation systems and feed scheduling
- Dynamic clip architecture allows complete project transparency with Incite News, Incite Editor Studio/Suite and Incite HD Suite for final finishing
- Live voice over recording toolkit for laying down commentary
- Built in script editor for news text feeds; scripts can be associated as metadata per clip
- The ability to archive projects using proxy files for faster browsing using less storage space

## NEWSROOM JOURNALISM: EDITING BY PROXY



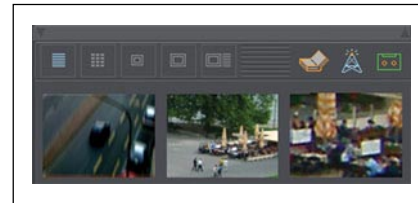
NEWSROOM  
JOURNALISM



# INCITE NEWS N2

**Incite News** is tailored made for fast cutting when it comes to news production. **Incite News** provides real-time access to native broadcast-quality media on SAN shared storage, can capture new footage directly to timeline and offers unparalleled hybrid and tape-to-tape editing. Adding titles, transitions and effects are absolute real-time tasks, giving you maximum speed and the freedom to finish your news programs. All editing sessions and the whole newsroom facility can be efficiently managed with an automated, MOS-style data structure, where projects are defined by an assignment list. Each journalist, producer, and editor in the network can share the same media and projects, regardless of whether they are editing on-line with **Incite News** or creating first-cut sequences with **Incite Newsmaker**, and can seamlessly link in to newsroom automation systems for final delivery.

*High resolution, fast-cutting news editor,  
fully-integrated with automation systems*



- Simultaneous, shared access to SAN-based broadcast-quality media
- Full-featured real-time toolkit: editing, FX and titling
- Edit low-res proxy files when needed and switch to hi-res files transparently
- Full range of formats: Lossless MJPEG and Lossy MJPEG, DV25, DV50, DVCPro MPEG 2 I-Frame and MPEG 2 IBP
- Choice of hardware: Matrox's DigiSuite Full, LE, LX, DTV and MAX
- Full range of I/O: SDI, SDTI\*, Firewire 1394, Component, Y/C and Composite; analogue audio and AES/EBU digital audio
- Capture direct to timeline and capture across timecode breaks
- Multiple VTR control: hybrid and tape-to-tape editing features
- Advanced media management of network based graphics, titles and FX libraries
- Real-time encoding to MPEG2 for playout
- Full, dynamic transparency with Incite Newsmaker and all other Incite applications

\* Support for SDTI to be announced.

ON-LINE  
PACKAGING



# INCITE EDITOR

## E3

Outfitted for sophisticated video editing, audio editing, real-time video and audio FX, rendered FX, advanced compositing, animated titling and much more, Incite Editor is the optimum editing and finishing tool for independent editors, broadcasters and post facilities. Incite Editor comes in three versions providing flexibility for the needs of your facility. All three versions offer a new state-of-the-art user interface that gives Incite Editor a contemporary feel, emphasizing usability and intuitiveness.

**Incite Editor** is ideal for single station users who require industry-proven stability, an extensive NLE toolkit, real-time FX and open architecture.

**Incite Editor Studio** combines the high-powered video editing of Incite Editor with advanced networking features and top-end tools for audio acquisition, mixing and real-time audio FX processing.

**Incite Editor Suite** is Incite's flagship driving production with broadcasting and networking features for the avant-garde and comes bundled with Incite Remote Producer for complete collaborative versatility.

- Choice of hardware: Matrox's DigiSuite Full, LE, LX, DTV and DigiSuite MAX
- Full-featured real-time toolkit: video, audio, FX, 3D FX, animated titling and graphics
- Simultaneous, shared access to SAN-based broadcast-quality media
- Edit low-res proxy files when needed and switch to hi-res files transparently
- Full range of formats: Lossless and Lossy MJPEG, DV25, DV50, DVCPRO, MPEG 2 I-Frame and MPEG 2 IBP
- Full range of I/O: SDI, SDTI\*, Firewire 1394, Component, Y/C and Composite; analogue audio and AES/EBU digital audio
- Fully-integrated, advanced audio features with the Mykerinos PCI audio card
- Capture direct to timeline and capture across timecode breaks
- Live input and tape-to-tape editing features (hybrid)
- Advanced media management of network based graphics, titles and FX libraries
- 16 simultaneous real-time FX on each real-time track
- Incite Task Server Automation and background rendering with scheduling for complex compositing FX
- Special Features: Real-time and Interpolated Speed Change, Multicamera Editing, Instant Replay (Edit clips during capture), Timeline export to Adobe After Effects
- Consolidate clips without recompression
- Real-time timeline export for DVD authoring and MPEG2 playout (with the MAX)
- Project transparency with Incite Remote Producer/Incite HD Suite and all other Incite applications

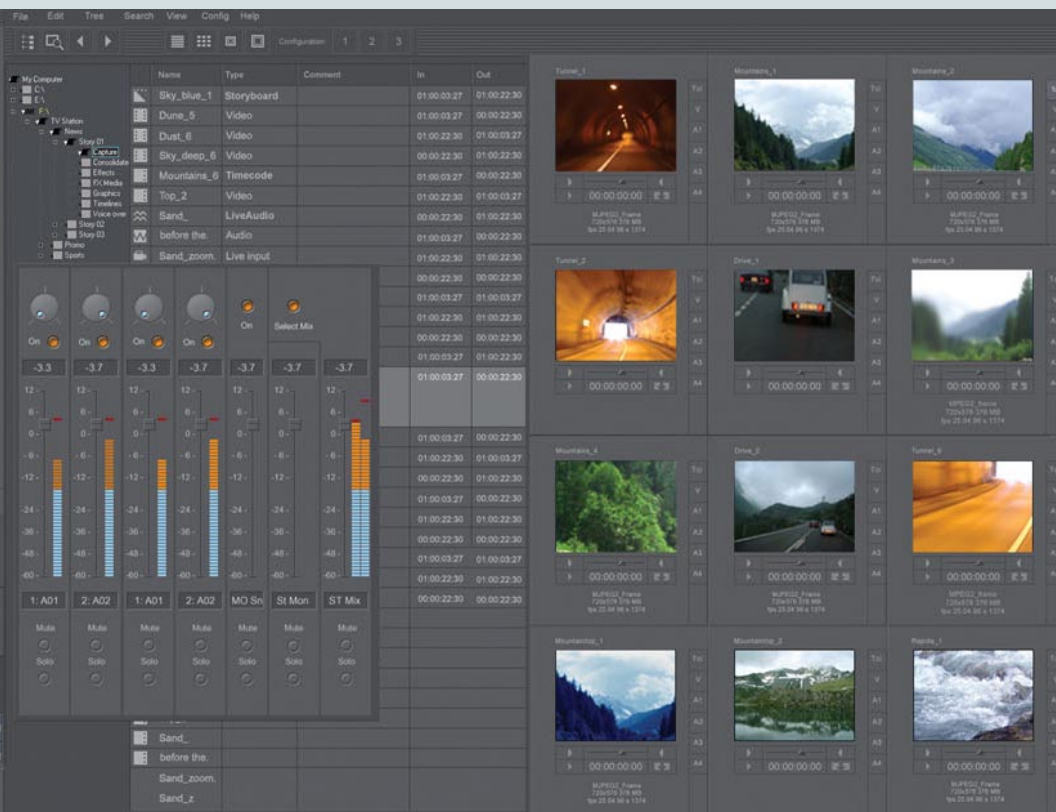
**B** \* Support for SDTI to be announced.

THE HEART OF INCITE POST PRODUCTION



*Incite's state-of-the-art editing application for post-production and promo*

EDITING FOR THE



- Media management tools provide instant access to all your local or SAN-based media, so you can play, organize, search, log and enter metadata for diverse types of clips, graphics and FX. Media Management is software-based, so you can perform all of these operations, including clip editing, even while digitizing to disk on the same station.
- With scalable Incite Task Server technology built in, you can render multiple files and encode diverse formats (including proxy files) automatically in the background, using all available CPU power, both local and network-based. Task Server technology is the perfect complement for Incite's advanced compositing and FX toolkit featuring color correction, lighting FX, particles, blurs & more.
- Advanced audio features, perfect for studio and suite production, deliver real-time audio FX, hot-mixing, customizable audio mixer interface, multiple mixes and monitors with direct control from the Incite timeline, full-duplex voice over recording, LTC display for window burn-in timecode, OMF audio export and more.
- Advanced networking features let you open clips already logged and organized by Incite Media Manager or project sequences initially prepared by Incite Newsmaker or Incite Remote Producer using proxy media files. All of this is due to Incite's universally dynamic clip architecture and project transparency.
- Incite Editor is also able to integrate or interact with 3<sup>rd</sup> party applications commonly found in production facilities. For instance, Incite Editor communicates seamlessly with 3<sup>rd</sup> party applications like Boris FX (bundled with Incite Editor), Boris RED, Adobe After Effects and Pyramix Virtual Studio.

PAINT-GARDE



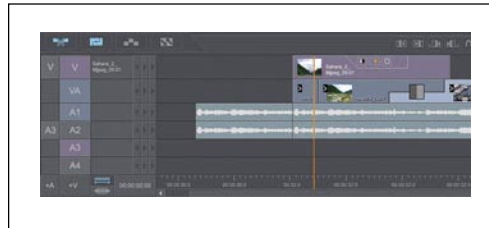
# INCITE REMOTE PRODUCER

## P1

**Incite Remote Producer** is a full-featured, hardware independent NLE application you can use virtually anywhere for pre-production or even complete production. **Incite Remote Producer** can edit low bitrate proxy files to create sequences to be finished later by Incite on-line applications or high bitrate files using software codec to build and finish projects in the field or on-site. Without any dedicated hardware, sophisticated effects can be created using Incite filters and plug-ins for CPU-processed effects, rendering these effects in the background or on the network. **Incite Remote Producer** can access shared media via Ethernet on central storage and deliver pre-production projects to Incite high-powered on-line systems like **Incite Editor Studio/Suite** and **Incite HD Suite**.



Full-featured software-based NLE for network and on site production

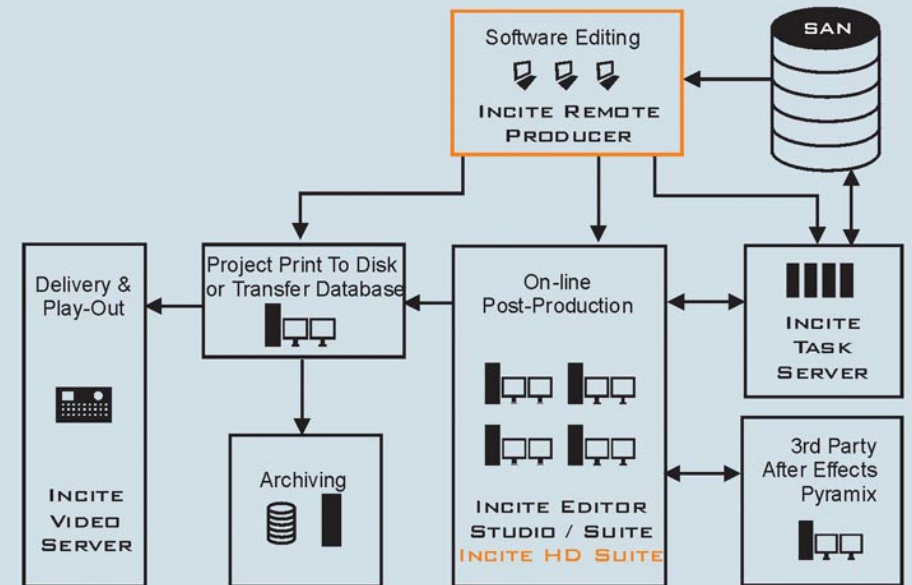


- Software-codec based editing for low-bandwidth (proxy) or high-bandwidth media on laptops or standard PCs
- Share and Edit high-bandwidth media over a basic Ethernet connection
- Project transparency with other Incite applications like Incite News and Incite Editor
- Dynamic clip architecture: share clips, clip information and metadata with other Incite applications, each application sourcing the necessary resolution format (low or high bandwidth)
- Advanced CPU-based FX and compositing tools
- Interaction with Incite Task Server for task automation, high speed processing and faster rendering



THE FREEDOM TO CREATE WHEREVER YOU ARE

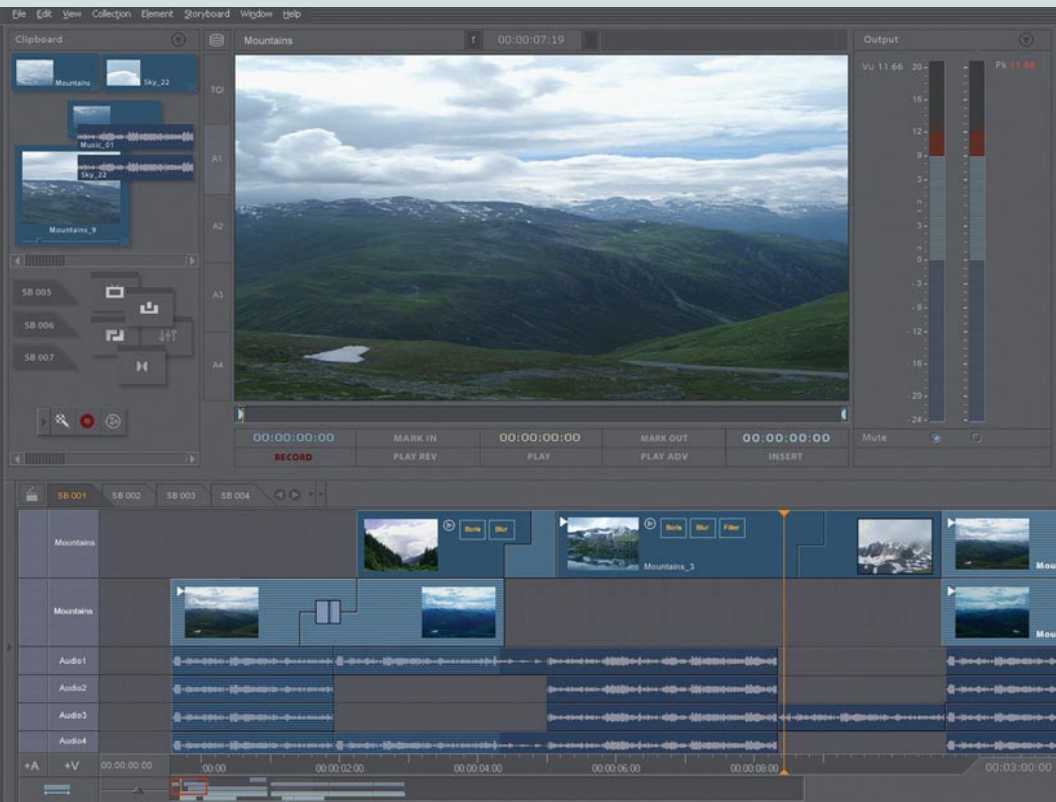
## INCITE COLLABORATIVE POST



PORTABLE  
PRODUCTION

# INCITE HD SUITE H6

WHEN POST REQUIRES MAXIMUM FIDELITY



*Our high-end editing system for the ultimate in post-production*

HD AND 24P  
FINISHING

Incite's HD-resolution editing system for the ultimate in video and film-resolution finishing built on DVS hardware. **Incite HD Suite** provides HDTV standards 720p, 1080p and 1035i/1080i, support for 24p editing and can use both 8-bit and 10-bit color depths for maximum image quality. The system can be used both as a remote HD recorder and a local HDTV edit station with complete connectivity on the SAN. Incite's dynamic clip architecture and project transparency lets you initially prepare projects and sequences in editing applications like **Incite Remote Producer** and **Incite Editor Studio/Suite** and then finish the production in **Incite HD Suite** for the ultimate fidelity in video quality and image detail: fast-action sports programs, stunning life-like documentaries, and even full length feature film and fiction production are all within your grasp.



*Incite HD Suite powered  
by DVS hardware*

- 10-bit and 8-bit YUV and RGB means the maximum in video quality
- Fully variable frame rate, including 24p for film projects and 60p for fast-action detail
- Real-time 3:2 pull-down for more comfortable editing
- Supported integration with popular 3<sup>rd</sup> party compositing applications
- SAN connectivity and project transparency for collaboration on the network
- Real time access to HDReel let's you take advantage of the digital lab workflow
- Dynamic clip architecture: Automatically re-link clips and sequences (edited with Incite proxy applications) from lower resolution media to HD resolution formats! Or recapture at HD only what you need.

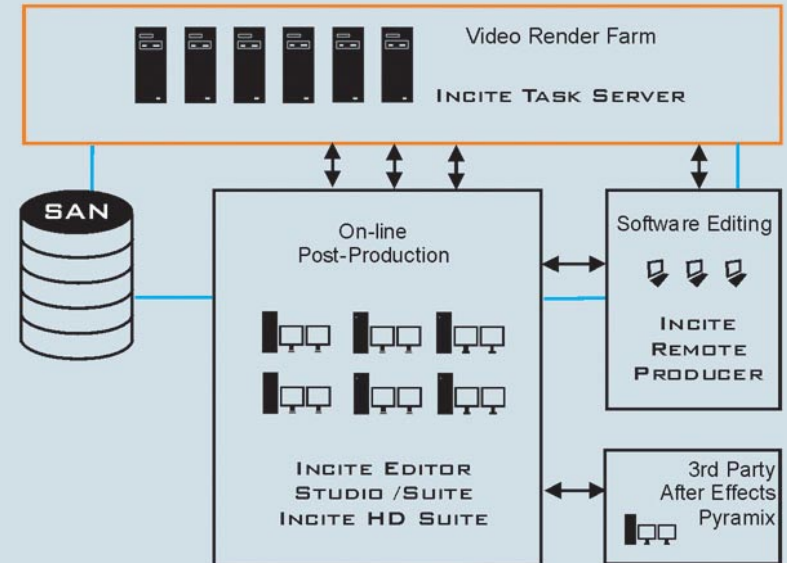
# INCITE TASK SERVER

## Q10

**Incite Task Server** delegates exponential processing power for the automation of time-consuming but vital tasks in all phases of post-production. Whether its batch digitizing, batch encoding, batch rendering or exporting sequences for final delivery, **Incite Task Server** lets you incorporate and manage all available CPU and hardware power connected to the network for faster performance and service. Use **Incite Task Server** to automate the creation of duplicate proxy media for off-line editing during the capture of high-bitrate media. Use **Incite Task Server** to monitor render requests and process those requests on high-speed video farms (approaching near real-time rendering) simultaneously encoding into multiple formats for different distribution markets. In addition, use **Incite Task Server** for increased efficiency when it comes to encoding your project timelines for export into MPEG 2 ready for playout.

- Use and manage all available CPU in the network for processing requests
- Local station task status display keeps you updated and informed about requests
- Automatic, dynamic update and display for render requests per clip on the timeline
- Batch render/encode clips on a single station or over multiple stations
- Use a collection of high-speed processing PCs and Ethernet connectivity to create a video render farm
- Distributive Processing: Render multiple clips on separate stations or focus all stations for the render per clip
- Easy on/off connection lets you configure once then easily allocate which stations will contribute their CPU power as needed
- Virtually unlimited station interconnectivity increases your processing power exponentially

TRUE TASK AUTOMATION FOR INCREASED PRODUCTION



*Manage encoding, rendering, and other tasks in the background*

DISTRIBUTIVE  
PROCESSING

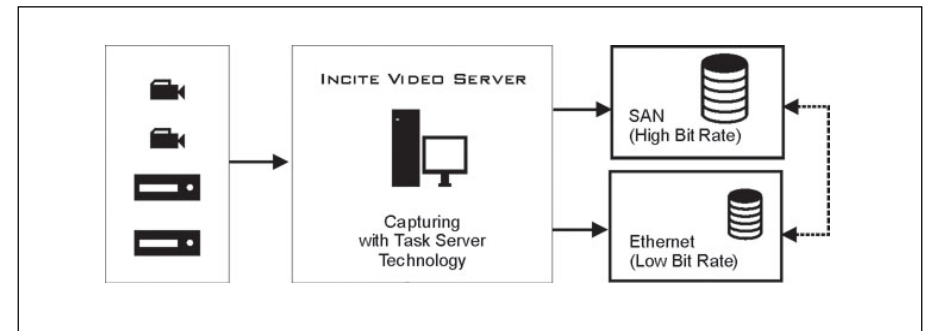
# INCITE VIDEO SERVER S4

FORMAT FREEDOM AND 4-CHANNEL ACQUISITION



Fully-automated ingest and playout application

Incite's 2 and 4 channel video server application automates acquisition with direct digitizing to the Storage Area Network (SAN) for increased sharing among workstations and easy access/file management. **Incite Video Server** uses the Matrox DigiServer hardware to input video through SDI and SDTI\* connections, offering the maximum quality in the digital domain. **Incite Video Server** comes with built in cut list, playout and media management applications and supports the Harris Louth 3<sup>rd</sup> party protocol for full automation for ingest and delivery. In the Incite network workflow, **Incite Video Server** integrates with **Incite Task Server** technology for the automatic generation of duplicate low bitrate media for proxy editing, and communicates with **Incite Media Logger** and **Incite Media Manager** for network-based or remote logging and advanced asset management before, during and after digitization.



- Up to 4 SDI Video I/O (equivalent to 4 VTRs); Ideal for VTR substitution in studio production or playout
- AES/EBU digital audio 2 stereo pairs per channel or 4 stereo embedded
- Direct communication with on-line systems and SAN connectivity
- Can be fully automated: Compatibility with Harris Louth automation supporting up to 100 cue points in a single clip
- Supports: MPEG2 4:2:2 compression up to 50 Mbps, MPEG2 4:2:0 compression up to 25 Mbps and MPEG2 Short and Long GOP
- DV 25, 50 DVCAM and capture at high speed using SDTI\*
- Built in cutlist and playlist applications
- Expandable integration allows communication with many 3<sup>rd</sup> party protocols and newsroom automation systems
- Local storage architecture with RAID protection with built in media management application

\* Support for SDTI to be announced.

Sie haben Interesse an Incite NLE Lösungen?  
Sie möchten Preise, Informationen und Incite im Live Betrieb kennenlernen!

Dann melden Sie sich bei uns...  
Wir helfen Ihnen gerne!

**CAM Fernseh-Produktions-GmbH**  
Gabelsbergerstr. 19  
D-50674 Köln

Tel.: +49 (0)221-28 35 30    Internet: [www.cam.de/Incite](http://www.cam.de/Incite)  
Fax: +49 (0)221-94 15 623    eMail: [info@cam.de](mailto:info@cam.de)

© COPYRIGHT INCITE MULTIMEDIA CORPORATION IMC INC., 2002. COMPANIES AND PRODUCTS ARE REFERRED TO BY THEIR TRADE NAMES.  
ALL NATIONALLY AND INTERNATIONALLY RECOGNIZED TRADEMARKS ARE HEREBY ACKNOWLEDGED. IMC RESERVES THE RIGHT TO MAKE CHANGES TO THE SPECIFICATIONS WITHIN THIS DOCUMENT AT ANY TIME WITHOUT NOTICE.

