

INCITE EDITOR

E3

Outfitted for sophisticated video editing, audio editing, real-time video and audio FX, rendered FX, advanced compositing, animated titling and much more, Incite Editor is the optimum editing and finishing tool for independent editors, broadcasters and post facilities. Incite Editor comes in three versions providing flexibility for the needs of your facility. All three versions offer a new state-of-the-art user interface that gives Incite Editor a contemporary feel, emphasizing usability and intuitiveness.

Incite Editor is ideal for single station users who require industry-proven stability, an extensive NLE toolkit, real-time FX and open architecture.

Incite Editor Studio combines the high-powered video editing of Incite Editor with advanced networking features and top-end tools for audio acquisition, mixing and real-time audio FX processing.

Incite Editor Suite is Incite's flagship driving production with broadcasting and networking features for the avant-garde and comes bundled with Incite Remote Producer for complete collaborative versatility.

- Choice of hardware: Matrox's DigiSuite Full, LE, LX, DTV and DigiSuite MAX
- Full-featured real-time toolkit: video, audio, FX, 3D FX, animated titling and graphics
- Simultaneous, shared access to SAN-based broadcast-quality media
- Edit low-res proxy files when needed and switch to hi-res files transparently
- Full range of formats: Lossless and Lossy MJPEG, DV25, DV50, DVCPRO, MPEG 2 I-Frame and MPEG 2 IBP
- Full range of I/O: SDI, SDTI*, Firewire 1394, Component, Y/C and Composite; analogue audio and AES/EBU digital audio
- Fully-integrated, advanced audio features with the Mykerinos PCI audio card
- Capture direct to timeline and capture across timecode breaks
- Live input and tape-to-tape editing features (hybrid)
- Advanced media management of network based graphics, titles and FX libraries
- 16 simultaneous real-time FX on each real-time track
- Incite Task Server Automation and background rendering with scheduling for complex compositing FX
- Special Features: Real-time and Interpolated Speed Change, Multicamera Editing, Instant Replay (Edit clips during capture), Timeline export to Adobe After Effects
- Consolidate clips without recompression
- Real-time timeline export for DVD authoring and MPEG2 playout (with the MAX)
- Project transparency with Incite Remote Producer/Incite HD Suite and all other Incite applications

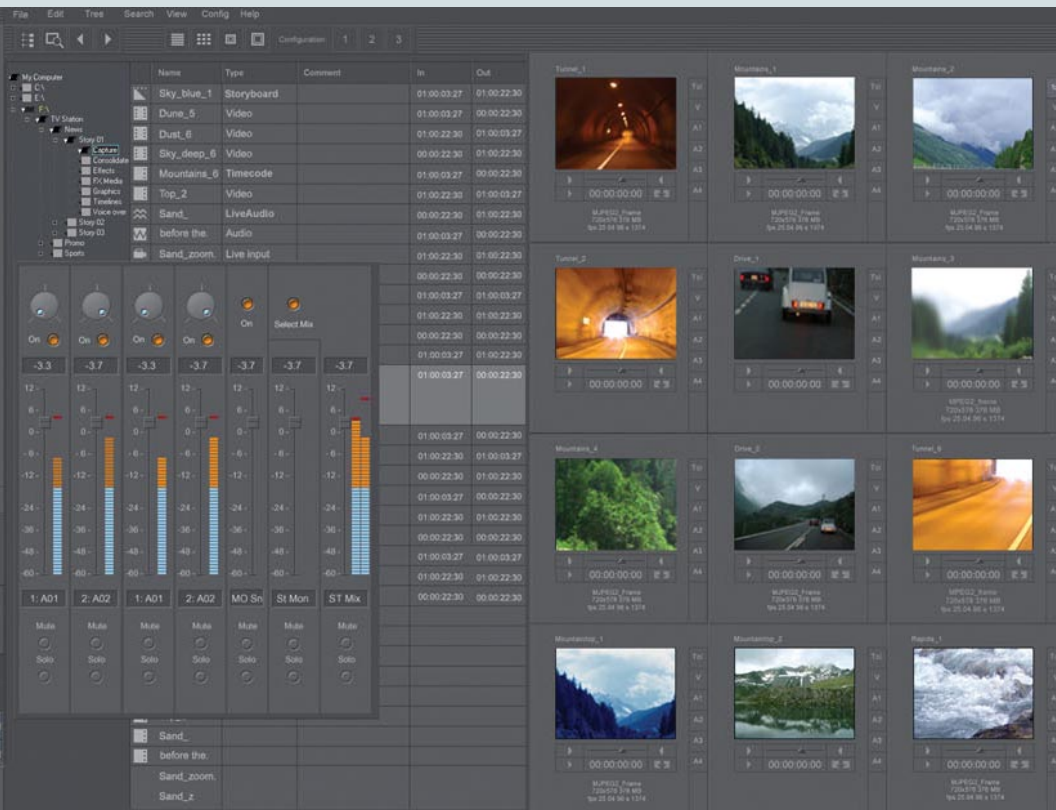
* Support for SDTI to be announced.

THE HEART OF INCITE POST PRODUCTION



Incite's state-of-the-art editing application for post-production and promo

EDITING FOR THE



- Media management tools provide instant access to all your local or SAN-based media, so you can play, organize, search, log and enter metadata for diverse types of clips, graphics and FX. Media Management is software-based, so you can perform all of these operations, including clip editing, even while digitizing to disk on the same station.
- With scalable Incite Task Server technology built in, you can render multiple files and encode diverse formats (including proxy files) automatically in the background, using all available CPU power, both local and network-based. Task Server technology is the perfect complement for Incite's advanced compositing and FX toolkit featuring color correction, lighting FX, particles, blurs & more.
- Advanced audio features, perfect for studio and suite production, deliver real-time audio FX, hot-mixing, customizable audio mixer interface, multiple mixes and monitors with direct control from the Incite timeline, full-duplex voice over recording, LTC display for window burn-in timecode, OMF audio export and more.
- Advanced networking features let you open clips already logged and organized by Incite Media Manager or project sequences initially prepared by Incite Newsmaker or Incite Remote Producer using proxy media files. All of this is due to Incite's universally dynamic clip architecture and project transparency.
- Incite Editor is also able to integrate or interact with 3rd party applications commonly found in production facilities. For instance, Incite Editor communicates seamlessly with 3rd party applications like Boris FX (bundled with Incite Editor), Boris RED, Adobe After Effects and Pyramix Virtual Studio.

PAINT-GARDE

